

# 8 - The Marquess of Stafford's Salute

28 August 1909

The first three staves of the musical score. Each staff begins with a treble clef and a 3/8 time signature. The music consists of a sequence of eighth and sixteenth notes, often beamed together in groups of four or six. The first staff contains 12 measures, the second 12 measures, and the third 12 measures, ending with a double bar line.

## Variation 1st

The first variation, consisting of three staves. The notation is similar to the main piece but features more complex rhythmic patterns, including dotted eighth and sixteenth notes, and groups of sixteenth notes. Each staff contains 12 measures, ending with a double bar line.

## Doubling of Variation 1st

The doubling of the first variation, consisting of three staves. The notation is identical to the first variation. Each staff contains 12 measures, ending with a double bar line.

## Variation 2nd

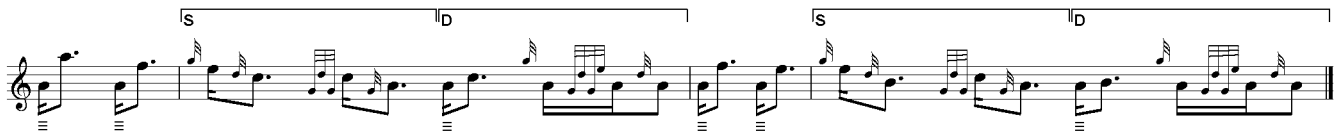
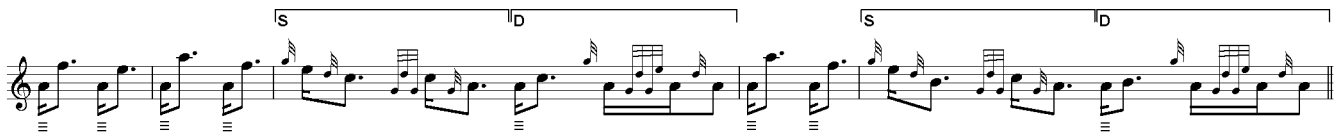
The second variation, consisting of two staves. The first staff begins with a treble clef and a 2/4 time signature. The notation features a mix of eighth and sixteenth notes. Each staff contains 12 measures, ending with a double bar line.



Doubling of Variation 2nd



Taorluath Singling and Doubling



Crunluath Singling and Doubling

