

# 20 - Captain Colin MacCrae's Salute

12 October 1910

## Urlar

The 'Urlar' section consists of three staves of music. The first staff begins with a treble clef and a 2/4 time signature. The melody is composed of eighth and sixteenth notes, with some notes beamed together. The second and third staves continue the melody, maintaining the same rhythmic pattern and note values.

## Doubling of Urlar

The 'Doubling of Urlar' section consists of three staves of music. It is a direct doubling of the 'Urlar' section, with the same melody and rhythm across all three staves.

## Variation 1st

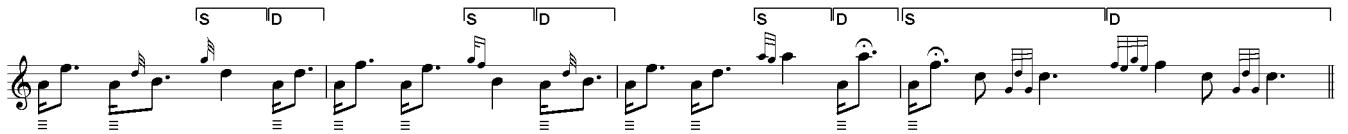
The 'Variation 1st' section consists of three staves of music. The melody is more complex than the original, featuring many beamed eighth and sixteenth notes. The first staff starts with a treble clef and a 2/4 time signature. The second and third staves continue the variation.

## Doubling of Variation 1st

The 'Doubling of Variation 1st' section consists of three staves of music. It is a direct doubling of the 'Variation 1st' section, with the same melody and rhythm across all three staves.



Taorluath Singling and Doubling



Crunluath Singling and Doubling

