

# 18 - Salute to the Marquis of Bute

12 August 1910

## Urlar

The Urlar section consists of three staves of music. Each staff begins with a treble clef, a common time signature (C), and a key signature of one sharp (F#). The first staff contains a melodic line with a series of eighth-note patterns and rests. The second and third staves continue this melodic line, with some notes beamed together and others separated by rests. The piece concludes with a double bar line.

## Doubling of Urlar

The Doubling of Urlar section consists of three staves of music. Each staff begins with a treble clef, a common time signature (C), and a key signature of one sharp (F#). The first staff contains a melodic line with a series of eighth-note patterns and rests, similar to the original Urlar. The second and third staves continue this melodic line, with some notes beamed together and others separated by rests. The piece concludes with a double bar line.

## Variation 1st

The Variation 1st section consists of three staves of music. Each staff begins with a treble clef, a common time signature (C), and a key signature of one sharp (F#). The first staff contains a melodic line with a series of eighth-note patterns and rests, similar to the original Urlar. The second and third staves continue this melodic line, with some notes beamed together and others separated by rests. The piece concludes with a double bar line.

## Doubling of Variation 1st

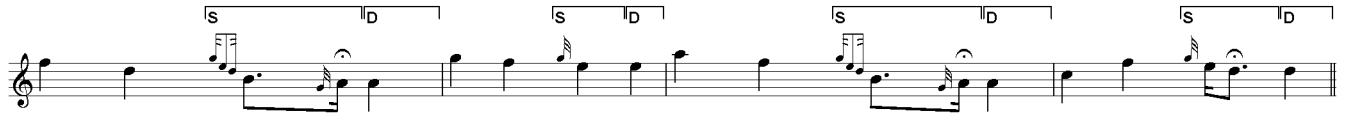
The Doubling of Variation 1st section consists of two staves of music. Each staff begins with a treble clef, a common time signature (C), and a key signature of one sharp (F#). The first staff contains a melodic line with a series of eighth-note patterns and rests, similar to the original Variation 1st. The second staff continues this melodic line, with some notes beamed together and others separated by rests. The piece concludes with a double bar line.



Taorluath and Crunluath Singing and Doubling



T C T C T C T C T C T C T C T C T C T C T C



T C T C T C T C T C T C T C T C T C T C T C



T C T C T C T C T C T C T C T C T C T C T C