

1 - His Most Excellent Majesty King Edward VII Salute

27 July 1906

The first section of the piece consists of three staves of music in 3/4 time. The melody is written in treble clef and features a series of eighth and sixteenth notes, with some notes beamed together. The music is characterized by a steady, rhythmic pattern.

Thumb Variation

The Thumb Variation consists of three staves of music in 3/4 time. It follows the same melodic line as the main piece but includes several variations, such as longer note values and different rhythmic groupings, to accommodate the thumb position.

Variation 1st

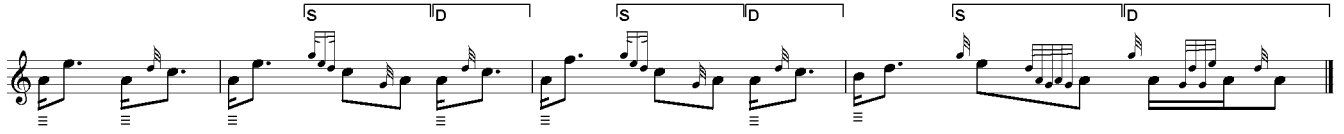
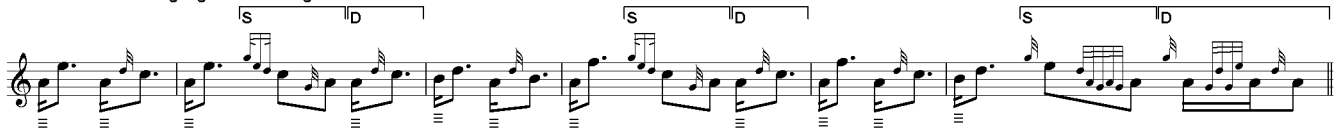
Variation 1st consists of three staves of music in 2/4 time. The tempo is faster than the main piece, and the melody is written in treble clef. It features a more complex rhythmic pattern with many sixteenth notes.

Doubling of Variation 1st

The Doubling of Variation 1st consists of two staves of music in 2/4 time. This section is a double of the first variation, meaning it contains two identical copies of the variation's melody.



Variation 2nd Singling and Doubling



Crunluath Singling and Doubling

